

ÀNGELS

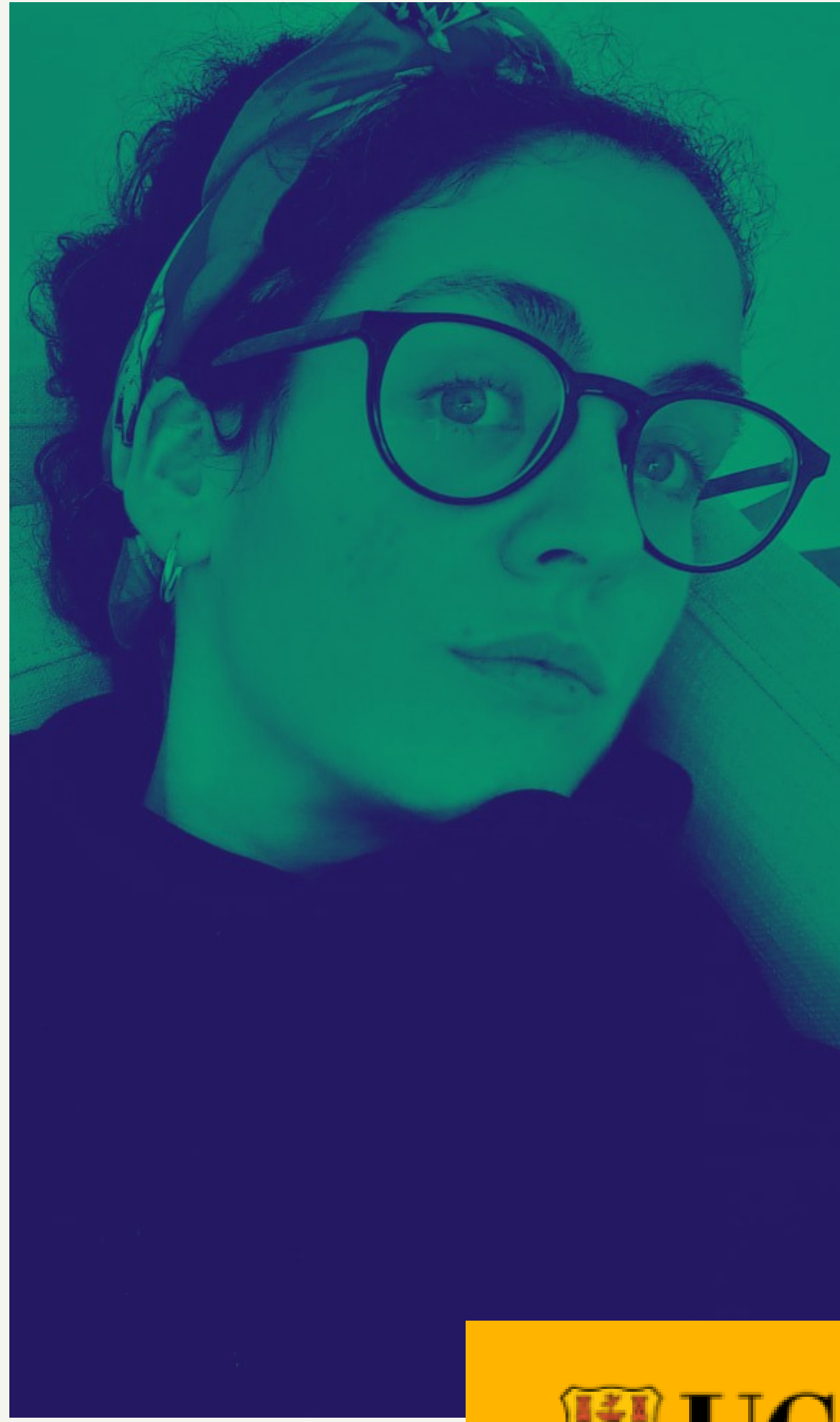
MORENO

BEATRIZ

CHIVITE

ALBA

CID



Department of
Spanish, Portuguese
& Latin American Studies

Rising female voices in Spanish peripheral poetry: challenges and goals (round-table)

APRIL 13, 2021

3.30 TO 5 PM IRELAND (GMT+1) (LIVE)

PLEASE, JOIN US HERE:

[HTTP://MEET.GOOGLE.COM/PSM-YDQV-CZE](http://meet.google.com/PSM-YDQV-CZE)

Contributors:

 institut
ramon llull


CENTRO
ESTUDOS
GALEGOS

 ETXEPARE
EUSKAL
INSTITUTUA

 XUNTA
DE GALICIA

A space for emerging female poets who write in minoritised languages in Spain (Galician, Catalan and Basque)